



Events & Group Bookings

From a birthday celebration or engagement, to corporate events and all-out functions, we can help you tailor the event of the year. Let our event planners take care of every last detail, from food, to styling, to music, and beyond. Every detail of your event is cared for, to bring the vision for your celebration to life.



Alaya Restaurant

www.alayarestaurants.com
[@alayadubai](https://www.instagram.com/alayadubai)

An avant garde dining and lifestyle concept
in the heart of DIFC.

The background image shows a restaurant interior. On the left, a long dining table is set with white tablecloths, white plates, and glasses. Orange upholstered chairs are arranged along the table. The room is filled with lush green plants, including palm trees and ferns, some of which are illuminated with warm, low-key lighting. In the background, a bar area is visible with several wine glasses on the counter. The overall atmosphere is warm and sophisticated.

Concept

A concept born out of adoration - Alaya pays homage to the progressive nature and rich culture of the region. The brand features a Mediterranean to Middle Eastern restaurant, open air terrace, mixologist focused bar, and boutique lounge.



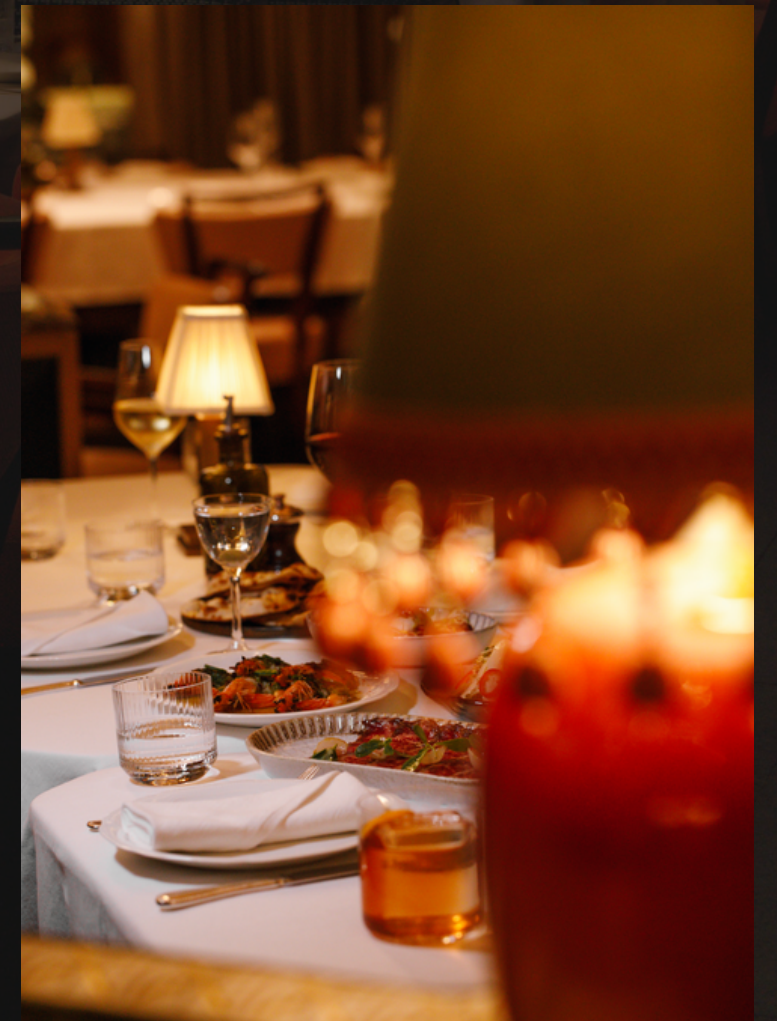
Design

The worldliness of the Mediterranean and Middle Eastern regions are introduced in an opulently decorated and luxurious space. Alaya celebrates the blend of cultures through a reinterpretation of both regional and art deco design.



Lifestyle

An experience driven concept - Alaya encompasses all aspects of an impeccable event, gathering or celebration.



Cuisine

The cuisine at Alaya encapsulates a tale of travels, with a wide-roaming menu from the Mediterranean Sea to the Middle East.



Menu

Our management teams will work alongside the head chef to curate bespoke food and beverage menus for any occasion.



Spaces

A dynamic lifestyle concept in the heart of DIFC, with the opulently designed spaces that exude elegance.



Azhar terrace

Evoking art deco glamour and effortless grace, the Azhar terrace features marble tables, green surrounds and a vibrant atmosphere.

30 people seated
50 people standing

SPACES

Saraya terrace

Warm and inviting, the largest terrace of Alaya is a beautiful space for any gathering. Think extravagant communal dining tables in an intimate setting.



60 people seated
100 people standing

SPACES

Indoor dining

Adorned with art, accent pieces, warm lighting, and high ceilings - the dining room of Alaya can be transformed for any opulent event.

120 people seated
160 people standing

SPACES

LY-LA

Lavish, layered, Bedouin-inspired. Step through time to another realm, through a concealed door in Alaya's underground. The opulent boutique lounge blends Bedouin nostalgia with nightlife energy. Richly decorated with textures and colors, LY-LA embraces the worldly character of the region.

LY-LA

80 people seated
130 people standing

SPACES



Contact Us

Phone
+971 4 570 6289

Email
reservations@alaya-dubai.com

Online
www.alayarestaurants.com